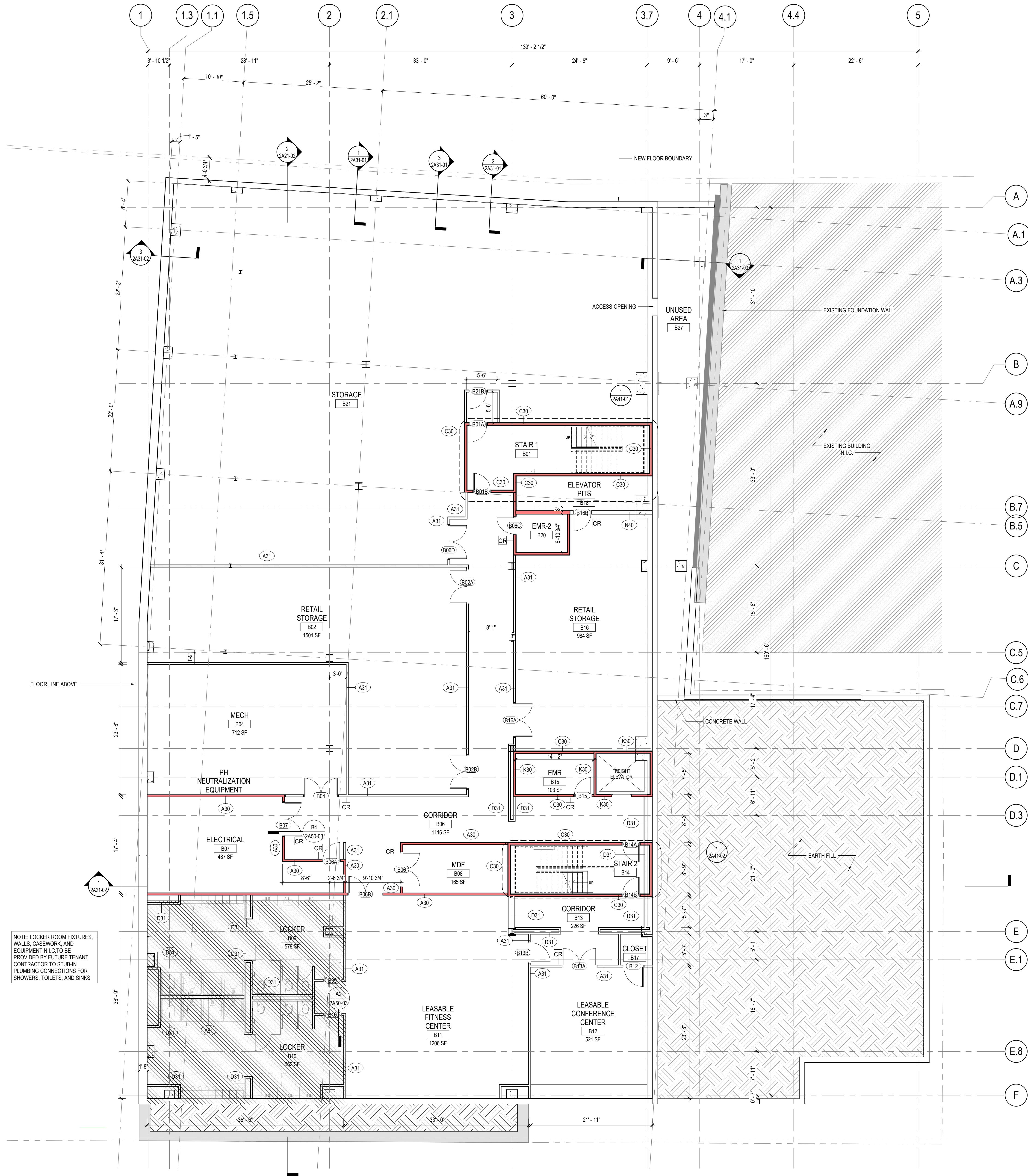


9 MARCH 2023



2 BASEMENT - FLOOR PLAN - PHASE 2
1/8" = 1'-0"

PARTITION PLAN LEGEND

- EXISTING PARTITION TO REMAIN
- NEW PARTITION
- DOOR NUMBER, REFER TO DOOR AND HARDWARE SCHEDULE ON SHEET A62-01 FOR FURTHER INFORMATION
- PARTITION TYPE
- FIRE EXTINGUISHER / CABINET
- AREA OUT OF ARCHITECTURAL SCOPE BUT REFER TO MEP AND STRUCTURAL DOCUMENTS FOR ADDITIONAL WORK IF REQUIRED

GENERAL NOTES

- PARTITIONS LOCATED BY DIMENSION STRING ARE DIMENSIONED TO THE UNFINISHED FACE OF THE WALL UNLESS NOTED OTHERWISE.
- PARTITIONS NOT DIMENSIONED ARE GENERALLY LOCATED BY ONE OF THE FOLLOWING CRITERIA:
 - CENTERLINE - CENTER OF PARTITION ALIGNS WITH THE CENTER OF GRIDLINE OR OBJECT CENTERLINE (SUCH AS A COLUMN OR WINDOW MULLION). CENTER THE OVERALL PARTITION WIDTH, RATHER THAN STUD WIDTH ON THE RELATED CENTERLINE.
 - ALIGN - LOCATE PARTITION FLUSH WITH FACE OF ANOTHER PARTITION OR ANOTHER SURFACE AS INDICATED.
 - SPECIFICALLY MAINTAIN DIMENSIONS NOTED AS "MINIMUM" OR "CLEAR".
- DOOR OPENINGS ARE DIMENSIONED TO CENTERLINE OF OPENING. IF NOT DIMENSIONED, THE HINGE SIDE OF DOOR SHALL BE SPACED 4" (INCLUDING THE JAMB) FROM THE ADJACENT WALL.
- ALL INTERIOR PARTITIONS TO BE TYPE 'A41' U.N.O. ALL NEW PARTITIONS ADJACENT TO PLUMBING FIXTURES SHALL HAVE MOISTURE RESISTANT GREEN BOARD IN THE SPECIFIED WALL TYPE.
- CONTRACTOR IS RESPONSIBLE FOR PROVIDING IN-WALL BLOCKING AS REQUIRED FOR ALL MOUNTED MILLWORK, ACCESSORIES, WALL MOUNTED DISPLAYS, SCREENS, LOCKERS, WALLBOARDS, HOOKS, AND OTHER EQUIPMENT (ITEMS MAY BE IN EITHER GC OR OWNER SCOPE. GC TO OWN BLOCKING INSTALLATION). COORDINATE BLOCKING REQUIREMENTS FOR WALL DISPLAYS 55" OR LARGER WITH AV VENDOR. REFER TO PLAN AND ELEVATIONS FOR LOCATIONS.
- CONTRACTOR IS RESPONSIBLE FOR PURCHASING AND INSTALLING FIRE EXTINGUISHER CABINETS AS NEEDED FOR THIS PROJECT.
- ANY ACCESS PANELS WITHIN GWB PARTITIONS AND CEILINGS SHALL BE FLUSH TAPE IN TYPE, PAINTED TO MATCH WALL OR CEILING COLOR.
- REFER TO LIFE SAFETY DRAWINGS FOR PARTITION FIRE RATINGS.
- ELECTRICAL PLATES AND DEVICES SHOULD BE CENTERED ON WALL, UNO.
- SPRAY FIRE RESISTANT MATERIAL, TYP. AT ALL INTERIOR COLUMNS U.N.O.
- CONTRACTOR IS RESPONSIBLE FOR ROOFTOP CURB LOCATIONS TO SUPPORT ROOFTOP MEP EQUIPMENT, TO BE COORDINATED USING FINAL PURCHASED ROOFTOP EQUIPMENT SIZE REQUIREMENTS.

Perkins&Will

225 Franklin Street, Suite 1100
Boston, MA 02110
1617.478.0300
www.perkinswill.com

Jensen Hughes
One Lincoln Street
Boston, MA 02111
1-800-273-3461

Bohler Engineers
45 Franklin Street
Boston, MA 02110
1617-449-8040

Perkins&Will
225 Franklin Street, Suite 1100
Boston, MA 02110
1617.478.0300
1617.478.0321

MCLV
524 Walnut #330
Kansas City, MO 64106
816-945-4199

The Green Engineer
23 Bradford Street
Concord, MA 01742
1-978-341-5462

RFS Engineering
50 Milk Street
Boston, MA 02109
1617-494-1464

RFS Engineering
50 Milk Street
Boston, MA 02109
1617-494-1464

PROJECT



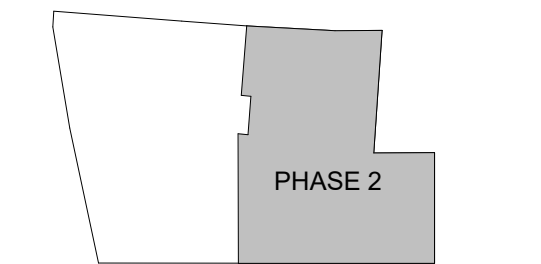
DAVIS SQUARE PLAZA



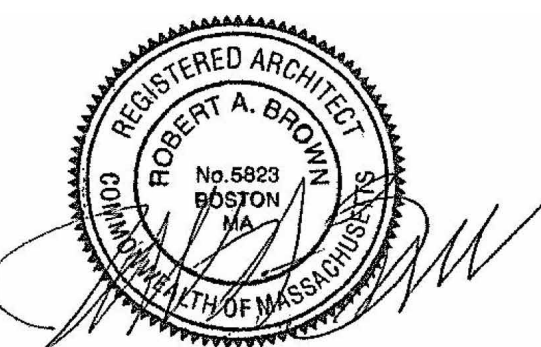
ASANA PARTNERS

1616 Camden Road Suite 210
Charlotte, NC 28203

KEYPLAN



ISSUE CHART



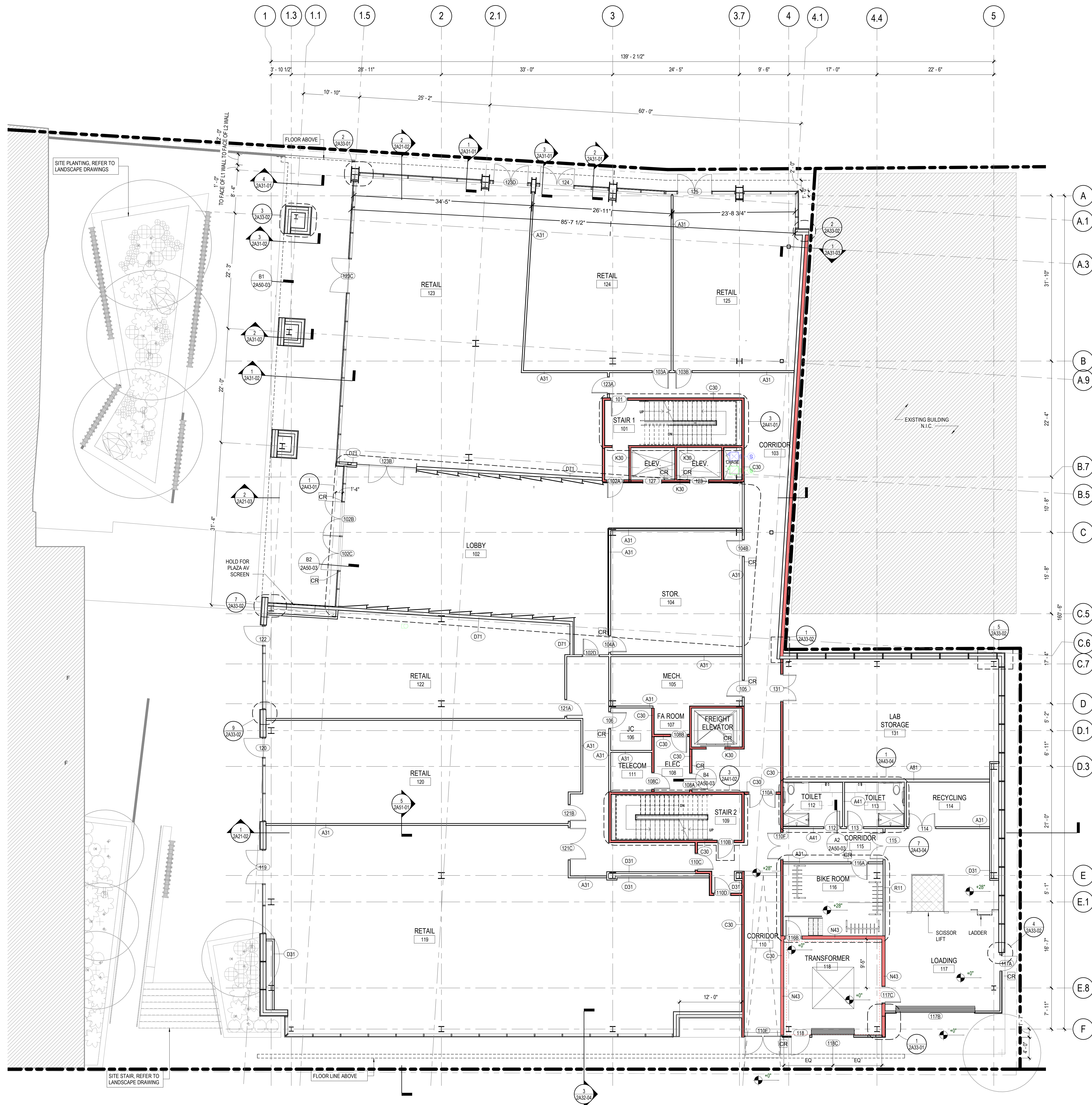
2	DEMO PERMIT	12/02/2022
DATE	SUBJ	DATE
Job Number	157100	TITLE

PHASE 2 - BASEMENT
PLAN

SHEET NUMBER

2A11-20

2/22/2023 4:53:57 PM BIM 360//Asana Partners - Davis Square Plaza/ARCH-Asana Partners-Davis Square Plaza.rvt



① LEVEL 01 - FLOOR PLAN - PHASE 2
1/8" = 1'-0"

PARTITION PLAN LEGEND

- EXISTING PARTITION TO REMAIN
- NEW PARTITION
- DOOR NUMBER, REFER TO DOOR AND HARDWARE SCHEDULE ON SHEET A62-01 FOR FURTHER INFORMATION
- PARTITION TYPE
- FIRE EXTINGUISHER / CABINET
- AREA OUT OF ARCHITECTURAL SCOPE BUT REFER TO MEP AND STRUCTURAL DOCUMENTS FOR ADDITIONAL WORK IF REQUIRED

GENERAL NOTES

- PARTITIONS LOCATED BY DIMENSION STRING ARE DIMENSIONED TO THE UNFINISHED FACE OF THE WALL UNLESS NOTED OTHERWISE.
- PARTITIONS NOT DIMENSIONED ARE GENERALLY LOCATED BY ONE OF THE FOLLOWING CRITERIA:
 - CENTERLINE - CENTER OF PARTITION ALIGNS WITH THE CENTER OF GRIDLINE OR OBJECT CENTERLINE (SUCH AS A COLUMN OR WINDOW MULLION). CENTER THE OVERALL PARTITION WIDTH, RATHER THAN STUD WIDTH ON THE RELATED CENTERLINE.
 - ALIGN - LOCATE PARTITION FLUSH WITH FACE OF ANOTHER PARTITION OR ANOTHER SURFACE AS INDICATED.
 - SPECIFICALLY MAINTAIN DIMENSIONS NOTED AS "MINIMUM" OR "CLEAR".
- DOOR OPENINGS ARE DIMENSIONED TO CENTERLINE OF OPENING. IF NOT DIMENSIONED, THE HINGE SIDE OF DOOR SHALL BE SPACED 4" (INCLUDING THE JAMB) FROM THE ADJACENT WALL.
- ALL INTERIOR PARTITIONS TO BE TYPE 'A41' U.N.O. ALL NEW PARTITIONS ADJACENT TO PLUMBING FIXTURES SHALL HAVE MOISTURE RESISTANT GREEN BOARD IN THE SPECIFIED WALL TYPE.
- CONTRACTOR IS RESPONSIBLE FOR PROVIDING IN-WALL BLOCKING AS REQUIRED FOR ALL MOUNTED MILLWORK, ACCESSORIES, WALL MOUNTED DISPLAYS, SCREENS, LOCKERS, WALLBOARDS, HOOKS, AND OTHER EQUIPMENT (ITEMS MAY BE IN EITHER GC OR OWNER SCOPE. GC TO OWN BLOCKING INSTALLATION). COORDINATE BLOCKING REQUIREMENTS FOR WALL DISPLAYS 55" OR LARGER WITH AV VENDOR. REFER TO PLAN AND ELEVATIONS FOR LOCATIONS.
- CONTRACTOR IS RESPONSIBLE FOR PURCHASING AND INSTALLING FIRE EXTINGUISHER CABINETS AS NEEDED FOR THIS PROJECT.
- ANY ACCESS PANELS WITHIN GWB PARTITIONS AND CEILINGS SHALL BE FLUSH TAPE IN TYPE, PAINTED TO MATCH WALL OR CEILING COLOR.
- REFER TO LIFE SAFETY DRAWINGS FOR PARTITION FIRE RATINGS.
- ELECTRICAL PLATES AND DEVICES SHOULD BE CENTERED ON WALL, UNO.
- SPRAY FIRE RESISTANT MATERIAL, TYP. AT ALL INTERIOR COLUMNS U.N.O.
- CONTRACTOR IS RESPONSIBLE FOR ROOFTOP CURB LOCATIONS TO SUPPORT ROOFTOP MEP EQUIPMENT. TO BE COORDINATED USING FINAL PURCHASED ROOFTOP EQUIPMENT SIZE REQUIREMENTS.

Perkins&Will

225 Franklin Street, Suite 1100
Boston, MA 02110
1617.478.0300
www.perkinswill.com

Jensen Hughes
One Lincoln Street
Boston, MA 02111
1-800-273-3461

Bohler Engineers
45 Franklin Street
Boston, MA 02110
1617.478.0300
1617.494.8040

LANDSCAPE ARCHITECT
Perkins&Will
225 Franklin Street, Suite 1100
Boston, MA 02110
1617.478.0300
1617.478.0321

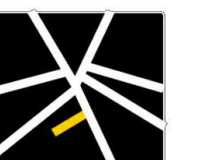
LANDSCAPE CONSULTANT
MCLV
524 Walnut #330
Kansas City, MO 64106
816-945-4199

SUSTAINABILITY CONSULTANT
The Green Engineer
23 Bradford Street
Concord, MA 01742
1978-341-5462

STRUCTURAL
RFS Engineering
50 Milk Street
Boston, MA 02109
1617-494-1464

MEPP
RFS Engineering
50 Milk Street
Boston, MA 02109
1617-494-1464

PROJECT



DAVIS SQUARE PLAZA

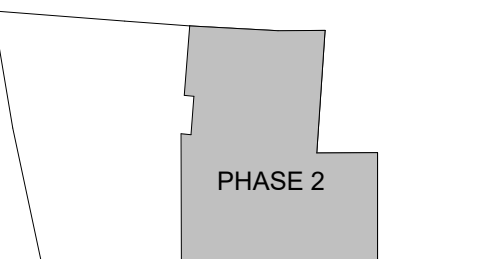
260 Elm Street, Somerville, MA
02144



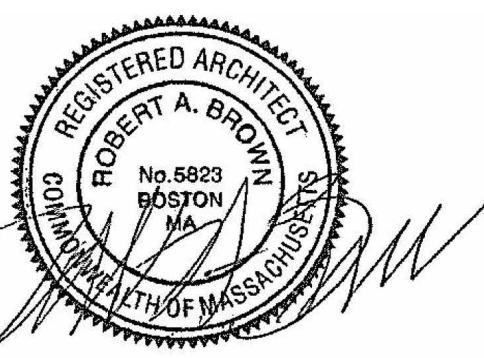
ASANA PARTNERS

1616 Camden Road Suite 210
Charlotte, NC 28203

KEYPLAN



ISSUE CHART



2	DEMO PERMIT	12/02/2022
DATE	SUBJ	DATE
Job Number	157100	TITLE

PHASE 2 - LEVEL 01 PLAN

SHEET NUMBER

2A11-21



2A11-22

BIM 360://Asana Partners - Davis Square Plaza/ARCH-Asana Partners-Davis Square Plaza.rvt

2/22/2023 4:50:02 PM BIM 360://Asana Partners - Davis Square Plaza/ARCH/ARCH-Asana Partners-Davis Square Plaza.rvt



3 LEVEL 03 - TYPICAL FLOOR PLAN - PHASE 2
1/8" = 1'-0"

PARTITION PLAN LEGEND

- EXISTING PARTITION TO REMAIN
- NEW PARTITION
- DOOR NUMBER, REFER TO DOOR AND HARDWARE SCHEDULE ON SHEET A62-01 FOR FURTHER INFORMATION
- PARTITION TYPE
- FIRE EXTINGUISHER / CABINET
- AREA OUT OF ARCHITECTURAL SCOPE BUT REFER TO MEP AND STRUCTURAL DOCUMENTS FOR ADDITIONAL WORK IF REQUIRED

GENERAL NOTES

- PARTITIONS LOCATED BY DIMENSION STRING ARE DIMENSIONED TO THE UNFINISHED FACE OF THE WALL UNLESS NOTED OTHERWISE.
- PARTITIONS NOT DIMENSIONED ARE GENERALLY LOCATED BY ONE OF THE FOLLOWING CRITERIA:
 - CENTERLINE - CENTER OF PARTITION ALIGNS WITH THE CENTER OF GRIDLINE OR OBJECT. CENTERLINE (SUCH AS A COLUMN OR WINDOW MULLION). CENTER THE OVERALL PARTITION WIDTH, RATHER THAN STUD WIDTH ON THE RELATED CENTERLINE.
 - ALIGN - LOCATE PARTITION FLUSH WITH FACE OF ANOTHER PARTITION OR ANOTHER SURFACE AS INDICATED.
 - SPECIFICALLY MAINTAIN DIMENSIONS NOTED AS "MINIMUM" OR "CLEAR".
- DOOR OPENINGS ARE DIMENSIONED TO CENTERLINE OF OPENING. IF NOT DIMENSIONED, THE HINGE SIDE OF DOOR SHALL BE SPACED 4" (INCLUDING THE JAMB) FROM THE ADJACENT WALL.
- ALL INTERIOR PARTITIONS TO BE TYPE 'A41' U.N.O. ALL NEW PARTITIONS ADJACENT TO PLUMBING FIXTURES SHALL HAVE MOISTURE RESISTANT GREEN BOARD IN THE SPECIFIED WALL TYPE.
- CONTRACTOR IS RESPONSIBLE FOR PROVIDING IN-WALL BLOCKING AS REQUIRED FOR ALL MOUNTED MILLWORK, ACCESSORIES, WALL MOUNTED DISPLAYS, SCREENS, LOCKERS, WALLBOARDS, HOOKS, AND OTHER EQUIPMENT (ITEMS MAY BE IN EITHER GC OR OWNER SCOPE. GC TO OWN BLOCKING INSTALLATION). COORDINATE BLOCKING REQUIREMENTS FOR WALL DISPLAYS 55" OR LARGER WITH AV VENDOR. REFER TO PLAN AND ELEVATIONS FOR LOCATIONS.
- CONTRACTOR IS RESPONSIBLE FOR PURCHASING AND INSTALLING FIRE EXTINGUISHER CABINETS AS NEEDED FOR THIS PROJECT.
- ANY ACCESS PANELS WITHIN GWB PARTITIONS AND CEILINGS SHALL BE FLUSH TAPE IN TYPE, PAINTED TO MATCH WALL OR CEILING COLOR.
- REFER TO LIFE SAFETY DRAWINGS FOR PARTITION FIRE RATINGS.
- ELECTRICAL PLATES AND DEVICES SHOULD BE CENTERED ON WALL, UNO.
- SPRAY FIRE RESISTANT MATERIAL, TYP. AT ALL INTERIOR COLUMNS U.O.N.
- CONTRACTOR IS RESPONSIBLE FOR ROOFTOP CURB LOCATIONS TO SUPPORT ROOFTOP MEP EQUIPMENT, TO BE COORDINATED USING FINAL PURCHASED ROOFTOP EQUIPMENT SIZE REQUIREMENTS.

Perkins&Will

225 Franklin Street, Suite 1100
Boston, MA 02110
1617.478.0300
www.perkinswill.com

CODE
Jensen Hughes
One Lincoln Street
Boston, MA 02111
1-800-273-9461

Civil
Bohler Engineers
45 Franklin Street
Boston, MA 02110
1617-849-8040

LANDSCAPE ARCHITECT
Perkins&Will
225 Franklin Street, Suite 1100
Boston, MA 02110
1617.478.0300
1617.478.0321

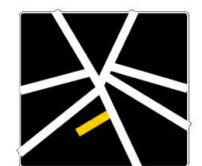
LANDSCAPE CONSULTANT
MCLV
524 Walnut #330
Kansas City, MO 64106
816-945-4199

SUSTAINABILITY CONSULTANT
The Green Engineer
23 Bradford Street,
Concord, MA 01742
1978-341-5462

STRUCTURAL
RFS Engineering
50 Milk Street
Boston, MA 02109
1617-494-1464

MEPP
RFS Engineering
50 Milk Street
Boston, MA 02109
1617-494-1464

PROJECT



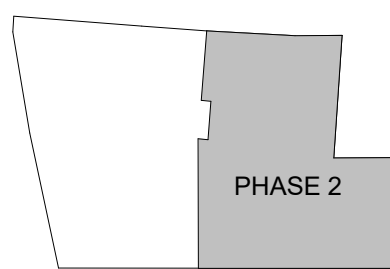
DAVIS SQUARE PLAZA



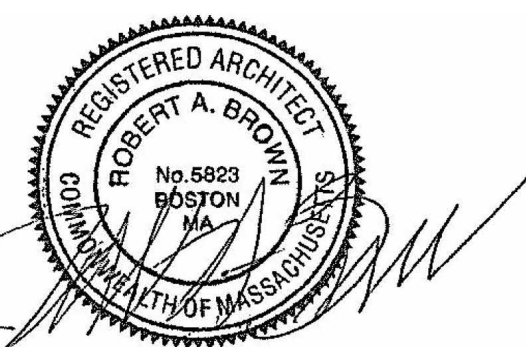
ASANA PARTNERS

1616 Camden Road Suite 210
Charlotte, NC 28203

KEYPLAN



ISSUE CHART



2	DEMO PERMIT	12/02/2022
DATE	SUBJ	DATE

Job Number 157100

TITLE

PHASE 2 - LEVEL 03
PLAN

SHEET NUMBER

2A11-23



④ LEVEL 04 - TYPICAL FLOOR PLAN - PHASE 2
1/8" = 1'-0"

PARTITION PLAN LEGEND

- EXISTING PARTITION TO REMAIN
- NEW PARTITION
- DOOR NUMBER, REFER TO DOOR AND HARDWARE SCHEDULE ON SHEET **A62-01** FOR FURTHER INFORMATION
- PARTITION TYPE
- FIRE EXTINGUISHER / CABINET
- AREA OUT OF ARCHITECTURAL SCOPE BUT REFER TO MEP AND STRUCTURAL DOCUMENTS FOR ADDITIONAL WORK IF REQUIRED

GENERAL NOTES

- PARTITIONS LOCATED BY DIMENSION STRING ARE DIMENSIONED TO THE UNFINISHED FACE OF THE WALL UNLESS NOTED OTHERWISE.
- PARTITIONS NOT DIMENSIONED ARE GENERALLY LOCATED BY ONE OF THE FOLLOWING CRITERIA:
 - CENTERLINE - CENTER OF PARTITION ALIGNS WITH THE CENTER OF GRIDLINE OR OBJECT CENTERLINE (SUCH AS A COLUMN OR WINDOW MULLION). CENTER THE OVERALL PARTITION WIDTH, RATHER THAN STUD WIDTH ON THE RELATED CENTERLINE.
 - ALIGN - LOCATE PARTITION FLUSH WITH FACE OF ANOTHER PARTITION OR ANOTHER SURFACE AS INDICATED.
 - SPECIFICALLY MAINTAIN DIMENSIONS NOTED AS "MINIMUM" OR "CLEAR".
- DOOR OPENINGS ARE DIMENSIONED TO CENTERLINE OF OPENING. IF NOT DIMENSIONED, THE HINGE SIDE OF DOOR SHALL BE SPACED 4" (INCLUDING THE JAMB) FROM THE ADJACENT WALL.
- ALL INTERIOR PARTITIONS TO BE TYPE 'A41' U.N.O. ALL NEW PARTITIONS ADJACENT TO PLUMBING FIXTURES SHALL HAVE MOISTURE RESISTANT GREEN BOARD IN THE SPECIFIED WALL TYPE.
- CONTRACTOR IS RESPONSIBLE FOR PROVIDING IN-WALL BLOCKING AS REQUIRED FOR ALL MOUNTED MILLWORK, ACCESSORIES, WALL MOUNTED DISPLAYS, SCREENS, LOCKERS, WALLBOARDS, HOOKS, AND OTHER EQUIPMENT (ITEMS MAY BE IN EITHER GC OR OWNER SCOPE. GC TO OWN BLOCKING INSTALLATION). COORDINATE BLOCKING REQUIREMENTS FOR WALL DISPLAYS 55" OR LARGER WITH AV VENDOR. REFER TO PLAN AND ELEVATIONS FOR LOCATIONS.
- CONTRACTOR IS RESPONSIBLE FOR PURCHASING AND INSTALLING FIRE EXTINGUISHER CABINETS AS NEEDED FOR THIS PROJECT.
- ANY ACCESS PANELS WITHIN GWB PARTITIONS AND CEILINGS SHALL BE FLUSH TAPE IN TYPE, PAINTED TO MATCH WALL OR CEILING COLOR.
- REFER TO LIFE SAFETY DRAWINGS FOR PARTITION FIRE RATINGS.
- ELECTRICAL PLATES AND DEVICES SHOULD BE CENTERED ON WALL, UNO.
- SPRAY FIRE RESISTANT MATERIAL, TYP. AT ALL INTERIOR COLUMNS U.O.N.
- CONTRACTOR IS RESPONSIBLE FOR ROOFTOP CURB LOCATIONS TO SUPPORT ROOFTOP MEP EQUIPMENT, TO BE COORDINATED USING FINAL PURCHASED ROOFTOP EQUIPMENT SIZE REQUIREMENTS.

Perkins&Will

225 Franklin Street, Suite 1100
Boston, MA 02110
1617.478.0300
1617.478.0321
www.perkinswill.com

CODE
Jensen Hughes
One Lincoln Street
Boston, MA 02111
1-800-273-3461

Civil
Bohler Engineers
45 Franklin Street
Boston, MA 02110
1617.478.0300
1617.478.0321

LANDSCAPE ARCHITECT
Perkins&Will
225 Franklin Street, Suite 1100
Boston, MA 02110
1617.478.0300
1617.478.0321

LANDSCAPE CONSULTANT
MCLV
524 Walnut #330
Kansas City, MO 64106
816-945-4199

SUSTAINABILITY CONSULTANT
The Green Engineer
23 Bradford Street
Concord, MA 01742
1978-341-5462

STRUCTURAL
RFS Engineering
50 Milk Street
Boston, MA 02109
1617-494-1464

MEPP
RFS Engineering
50 Milk Street
Boston, MA 02109
1617-494-1464

PROJECT



DAVIS SQUARE PLAZA

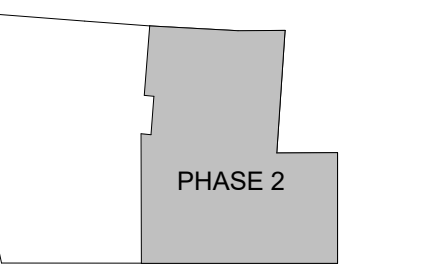


ASANA
PARTNERS

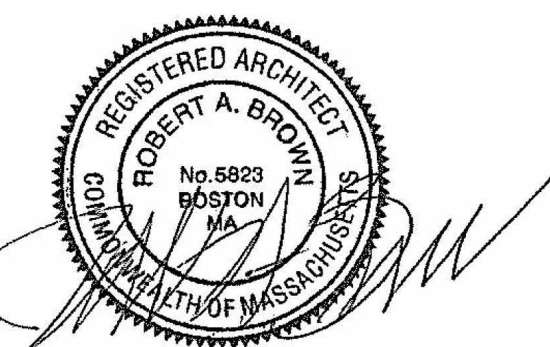
ASANA PARTNERS

1616 Camden Road Suite 210
Charlotte, NC 28203

KEYPLAN



ISSUE CHART



2	DEMO PERMIT	12/02/2022
DATE	SUBJ	DATE

Job Number 157100

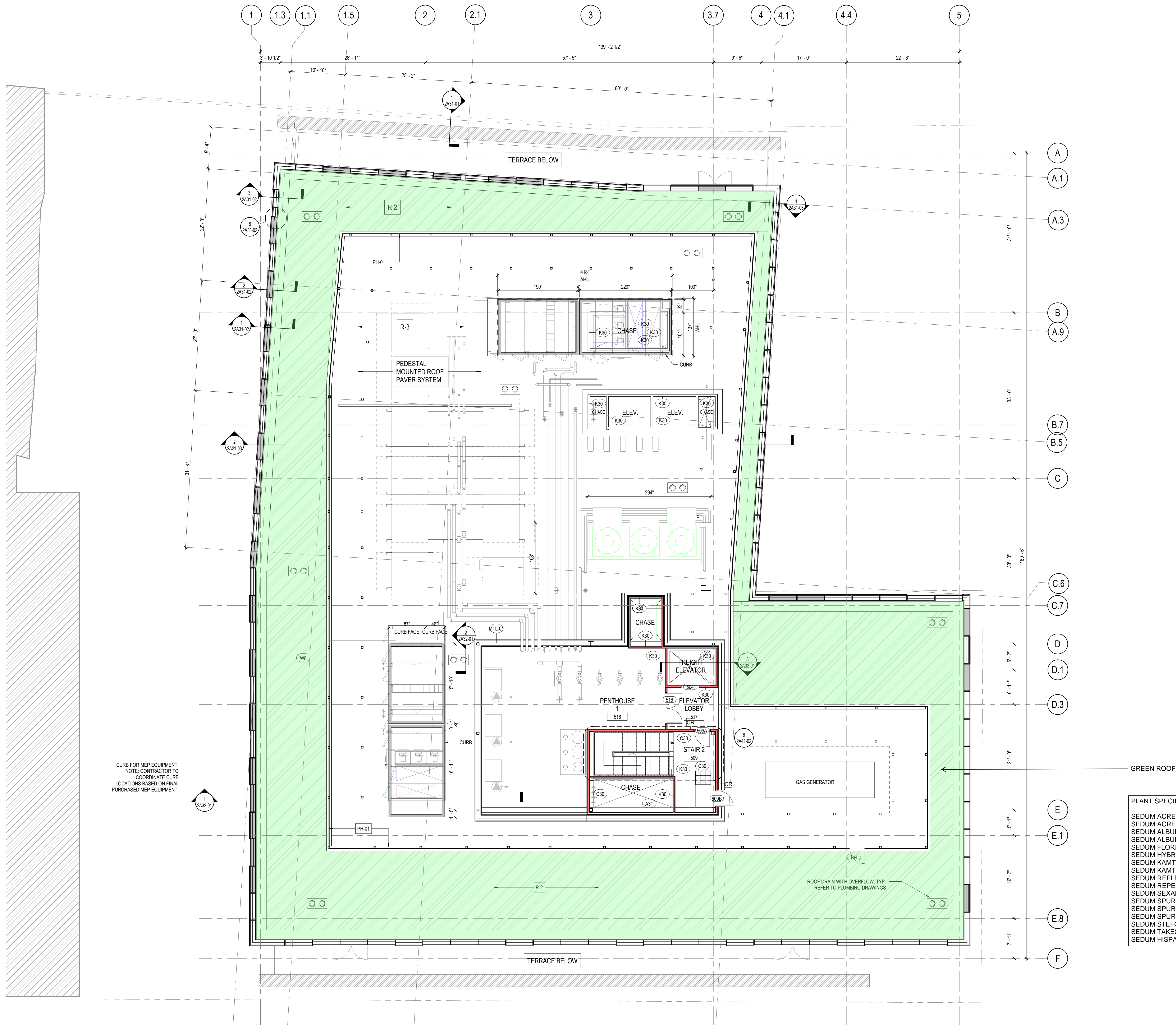
TITLE

PHASE 2 - LEVEL 04
PLAN

SHEET NUMBER

2A11-24

2/22/2023 4:50:08 PM BIM 360://Asana Partners - Davis Square Plaza/ARCH-Asana Partners-Davis Square Plaza.rvt



PARTITION PLAN LEGEND

- EXISTING PARTITION TO REMAIN
- NEW PARTITION
- DOOR NUMBER, REFER TO DOOR AND HARDWARE SCHEDULE ON SHEET A62-01 FOR FURTHER INFORMATION
- PARTITION TYPE
- FIRE EXTINGUISHER / CABINET
- AREA OUT OF ARCHITECTURAL SCOPE BUT REFER TO MEP AND STRUCTURAL DOCUMENTS FOR ADDITIONAL WORK IF REQUIRED

GENERAL NOTES

- PARTITIONS LOCATED BY DIMENSION STRING ARE DIMENSIONED TO THE UNFINISHED FACE OF THE WALL UNLESS NOTED OTHERWISE.
- PARTITIONS NOT DIMENSIONED ARE GENERALLY LOCATED BY ONE OF THE FOLLOWING CRITERIA:
 - CENTERLINE - CENTER OF PARTITION ALIGNS WITH THE CENTER OF GRIDLINE OR OBJECT CENTERLINE (SUCH AS A COLUMN OR WINDOW MULLION). CENTER THE OVERALL PARTITION WIDTH, RATHER THAN STUD WIDTH ON THE RELATED CENTERLINE.
 - ALIGN - LOCATE PARTITION FLUSH WITH FACE OF ANOTHER PARTITION OR ANOTHER SURFACE AS INDICATED.
 - SPECIFICALLY MAINTAIN DIMENSIONS NOTED AS "MINIMUM" OR "CLEAR".
- DOOR OPENINGS ARE DIMENSIONED TO CENTERLINE OF OPENING. IF NOT DIMENSIONED, THE HINGE SIDE OF DOOR SHALL BE SPACED 4" (INCLUDING THE JAMB) FROM THE ADJACENT WALL.
- ALL INTERIOR PARTITIONS TO BE TYPE 'A41' U.N.O. ALL NEW PARTITIONS ADJACENT TO PLUMBING FIXTURES SHALL HAVE MOISTURE RESISTANT GREEN BOARD IN THE SPECIFIED WALL TYPE.
- CONTRACTOR IS RESPONSIBLE FOR PROVIDING IN-WALL BLOCKING AS REQUIRED FOR ALL MOUNTED MILLWORK, ACCESSORIES, WALL MOUNTED DISPLAYS, SCREENS, LOCKERS, WALLBOARDS, HOOKS, AND OTHER EQUIPMENT (ITEMS MAY BE IN EITHER GC OR OWNER SCOPE. GO TO OWN BLOCKING INSTALLATION). COORDINATE BLOCKING REQUIREMENTS FOR WALL DISPLAYS 55" OR LARGER WITH AV VENDOR. REFER TO PLAN AND ELEVATIONS FOR LOCATIONS.
- CONTRACTOR IS RESPONSIBLE FOR PURCHASING AND INSTALLING FIRE EXTINGUISHER CABINETS AS NEEDED FOR THIS PROJECT.
- ANY ACCESS PANELS WITHIN GNB PARTITIONS AND CEILINGS SHALL BE FLUSH TAPE IN TYPE, PAINTED TO MATCH WALL OR CEILING COLOR.
- REFER TO LIFE SAFETY DRAWINGS FOR PARTITION FIRE RATINGS.
- ELECTRICAL PLATES AND DEVICES SHOULD BE CENTERED ON WALL, UNO.
- CONTRACTOR IS RESPONSIBLE FOR PURCHASING AND INSTALLING FIRE EXTINGUISHER CABINETS AS NEEDED FOR THIS PROJECT.
- CONTRACTOR IS RESPONSIBLE FOR PURCHASING AND INSTALLING FIRE EXTINGUISHER CABINETS AS NEEDED FOR THIS PROJECT.

GREEN ROOF

PLANT SPECIES IN GREEN ROOF SEDUM CARPET TO INCLUDE:
SEDUM ACRE 'AUREUM'
SEDUM ACRE 'GOLDMOSS'
SEDUM ALBUM 'CORAL CARPET'
SEDUM ALBUM 'MURALE'
SEDUM FLORIFERUM 'WEIHENSTEPHANER GOLD'
SEDUM HYBRIDUM 'IMMERGRUNCHEN'
SEDUM KAMTSCHATICUM
SEDUM KAMTSCHATICUM 'VARIETGATUM'
SEDUM REFLEXUM 'BLUE SPRUCE'
SEDUM REPETRE 'ANGELINA'
SEDUM SEXANGULARE
SEDUM SPURIUM 'FULDAGLUT'
SEDUM SPURIUM 'JOHN CREECH'
SEDUM SPURIUM 'RED CARPET'
SEDUM STEFEO
SEDUM TAKESIMENSIS 'GOLDEN CARPET'
SEDUM HISPANICUM

Perkins&Will

225 Franklin Street, Suite 1100
Boston, MA 02110
1617.478.0300
www.perkinswill.com

Jensen Hughes
One Lincoln Street
Boston, MA 02111
1-800-273-3461

Bohler Engineers
45 Franklin Street
Boston, MA 02110
1617-494-8040

Perkins&Will
225 Franklin Street, Suite 1100
Boston, MA 02110
1617.478.0300
1617.478.0321

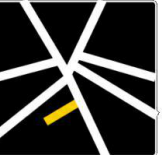
MCLV
524 Walnut #330
Kansas City, MO 64106
816-945-4199

The Green Engineer
23 Bradford Street
Concord, MA 01742
1-978-341-5462

RFS Engineering
50 Milk Street
Boston, MA 02109
1617-494-1464

RFS Engineering
50 Milk Street
Boston, MA 02109
1617-494-1464

PROJECT



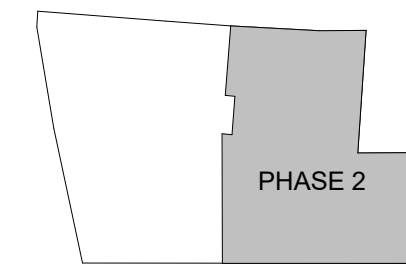
DAVIS SQUARE PLAZA



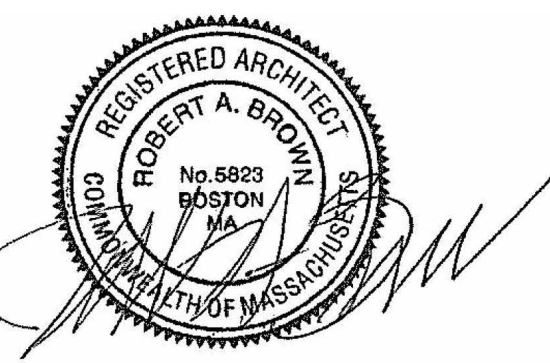
ASANA PARTNERS

1616 Camden Road Suite 210
Charlotte, NC 28203

KEYPLAN



ISSUE CHART



2 DEMO PERMIT 12/02/2022
DATE: 157100

PHASE 2 -
PENTHOUSE PLAN

SHEET NUMBER

2A11-25

5 PENTHOUSE PLAN - PHASE 2
1/8" = 1'-0"